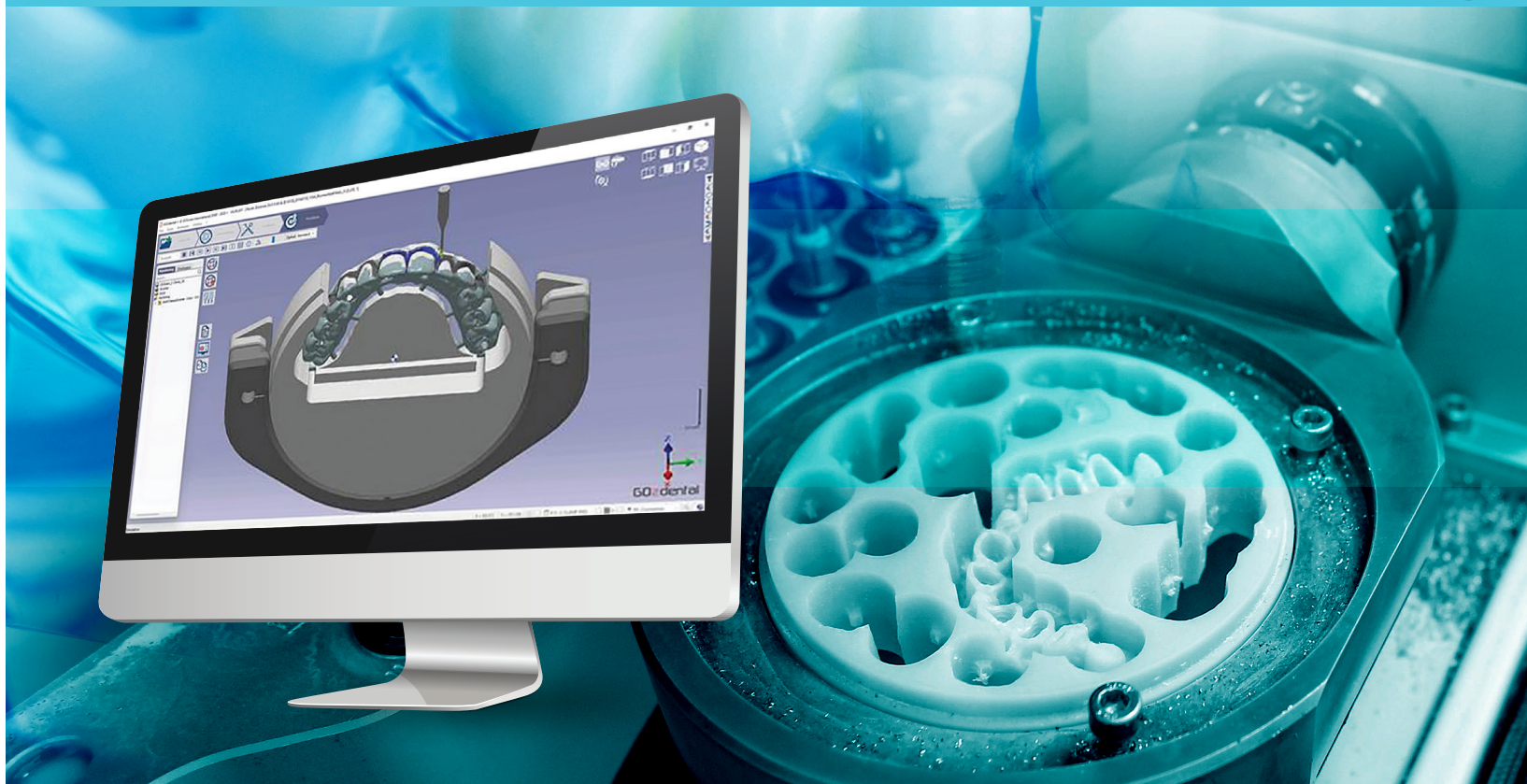




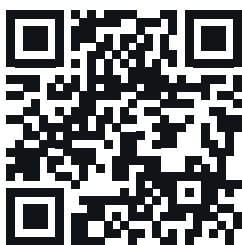
# ART OF DENTAL MILLING



## GO2CAM IS A CAM SOFTWARE EDITOR.

We have been a fully independent CAM software publisher for more than 30 years. We create and develop softwares that meet the unique needs of our customers. Our application fields are industrial and medical.

We are a strong team and proud of our solutions and innovations.



Scan the QR code for further information about our additional modules.

Designed for dental technicians, GO2dental lets you take full advantage of all the machines on the market.



PRODUCTION AUTOMATION

Enhanced automation saves you programming time.



RESOURCE OPTIMIZATION

Our blank management lets you maximize the number of items produced.



BEST MILLING QUALITY

Our strategies are designed to let you get the most out of the combination of the spindle capacity with the machine rigidity and the tools used.



# DISCOVER OUR DEDICATED SOLUTIONS

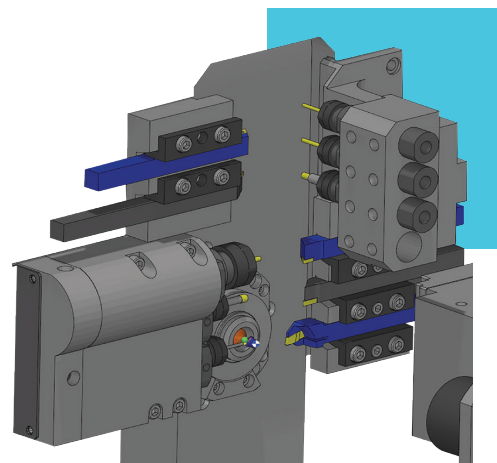
## CUSTOM ABUTMENTS

FASTER, CHEAPER, MORE ACCURATE



Industrialise your customized abutment production:

- Customized machine abutments within 6 minutes, that is 10 abutments per hour.
- Creation of your own automated strategies.
- Certification & accuracy.



## ALIGNER TRIMMING

WORKLOAD DIVIDED BY 4



Trim the aligners with a machine instead of spending valuable human resources. Value the time of your experienced dental technicians.

Your work load is split by 4. With the ability to cut up to 60 aligners per hour, you can plan with confidence to increase that part of your business.

## CHAIRSIDE

DIRECT MILLING

Count on our smart and efficient automation to deliver fast and reliable results.

Automatic modelling:

The only competences you need are those you already have in terms of morphology. The software handles the rest.

From design to crown and / or onlay in just a few clicks:

You go from designing to milling.

Fast restoration.

Thanks to the precise modelling and milling, your patients are able to get their dental restauration in a single visit.

